



www.vija-design.com

The Skin to Skin Cami & Bandeau

THE BEST "KANGAROO CARE & EASY HUG" SET!!!

-Pretty cross-over style Cami, made of comfortable stretch cotton / spandex jersey without heavy metals, Oeko-Tex certified.

-Allows easy breastfeeding

-Can safely hold a baby up to 20lbs (9 kg) in skin to skin babywearing. Holding parent can be in sitting position, semi-laying or stand-up, with **hand-free mobility (with bandeau)**. In addition to **bonding, skin to skin contact** from birth up to about 2-3 months old, can help stabilize baby's temperature, promotes the onset of breastfeeding, stimulates digestion, as well as several other **benefits to baby's health.**

-Provides light postpartum tummy support

-Nothing to attach, nothing to adjust



The essential 3-in-1

NOT A BABY CARRIER. Do not wear over another garment

IMPORTANT ! ...TO KEEP FOR FUTURE CONSULTATIONS

If you wish to use the "skin-to-skin holding / babywearing fonction" of your SKIN-to-SKIN CAMI & BANDEAU, please **READ ALL WARNINGS carefully before using.**

WARNINGS

- ! WARNING** - Failure to follow the manufacturer's instructions could result in death or serious injury
- ! WARNING — SUFFOCATION HAZARD**
Babies can suffocate in this product if the face is crushed against your body. Babies most at risk of suffocation include those born prematurely and those with respiratory problems. Check often to make sure baby's face is uncovered, mouth and nose are always visible and never obstructed.
- ! WARNING —** For premature infants, low birth weight babies (less than 7lbs-3,5kg) and babies with medical problems, always seek medical advice before using this product.
- ! WARNING —** Make sure baby does not curl into a position with the chin resting on or near baby's chest. This position can interfere with breathing, even when nothing is covering the nose or mouth.
- ! WARNING —** To avoid any risk of a fall, make sure that baby is always securely held inside inner "X", 3 layers of fabric must be spread over baby's body and always cover the upper part of his/her back + shoulders.
- ! WARNING —** If you use of the babywearing feature of this Cami & Bandeau when wearer is in a vertical & mobile position, use it with **one** healthy baby only, weighing from 5lbs (2,5 kg) up to about 15 lbs (7 kg).
- ! WARNING —** Do not babywear when cooking, drinking hot drinks, doing any sports, handling heavy objects, etc.
-Stay away from any heat sources or exposure to chemicals.
-Never babywear in your Cami while driving or being a passenger in a motor vehicle
- ! WARNING —** Never force baby's arms & legs into an unusual position. Always hold baby's head when handling if your baby is not old enough to hold his / her head.

INSTRUCTIONS:



-Try the garment before buying. It must follow the body, without being loose or being too tight. **IMPORTANT:** but **lower support band must be tight on wearer's belly**, since it retains the baby from slipping down. If the garment fits well but the inner support band is not tight enough, you can use a smaller size Bandeau (sold separately) over the Cami.

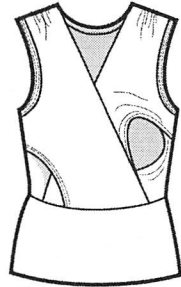
-New garment must be washed before wearing with baby. Wash with mild soap, cold or lukewarm water. Turn garment inside out to dry in dryer (delicate cycle) until it is still a little damp. Then hang to dry the balance (your Cami will maintain good appearance - good for all your cotton garments!).

-Always check that your Cami & Bandeau is in good condition before using its "skin to skin babywearing feature". Seams must be well closed. Avoid leaving the garment under UV rays (sun) to prevent premature aging of cotton (good for all your cotton garments!).

NOTE: The Skin to Skin Cami & Bandeau was designed for a single user / wearer. It is not recommended to buy it second hand.

-Put on your Cami like any other Cami or T-shirt. Put on the Bandeau over the Cami. You can place over bustline or under bustline. Nothing to tie. Replace neckline fabric if they're pulled out.

-For breastfeeding, simply pull down the bandeau and open semi-lateral opening, or simply pull-open cross over neckline. **(not suitable for breastfeeding whilst baby is in the Cami). If you do, never leave baby in cradle position inside the Cami)**



-To place baby inside your shirt, **follow instructions (overleaf), BE CAREFUL: BABY MUST BE PLACED INSIDE THE INNER "X"**. A bad position could tear your Cami and / or would not offer an adequate protection to your baby. Also **make sure that baby's head is always supported.**

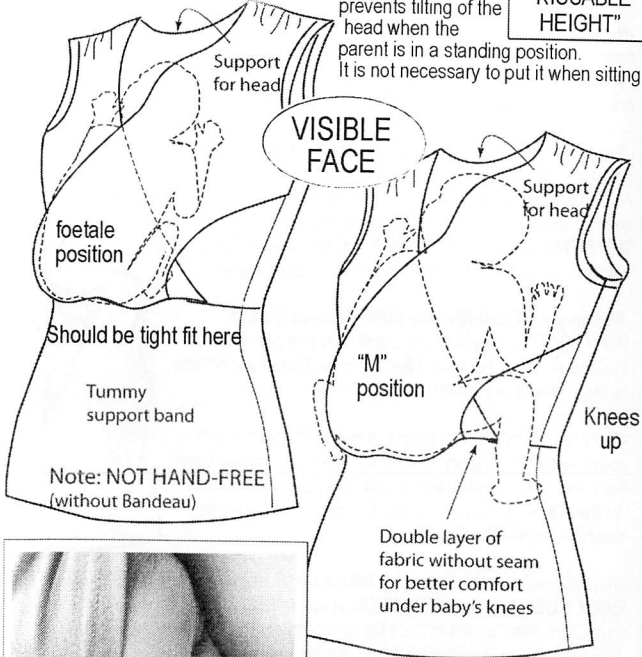
RECOMMENDATIONS / ADDITIONAL WARNINGS:

- ▶-When you position your baby into the Cami & Bandeau, make sure you are in a **safe place**. If baby is agitated, take the time to calm down before continuing.
- ▶-This Cami is not a baby carrier, **don't put it over another garment.** Baby must be without garments (skin to skin contact) - or with very light garments to **avoid excessive heat.**
- ▶-Make sure baby's **airway is always clear and baby can breathe well**, that baby's head and neck are not tilted too far back or forward/up or down.
- ▶-Baby should always be in **vertical position, sitting inside inner "X"**. **Head should be close enough to kiss**
- ▶-**Stay tuned to baby's needs** (do not fall asleep). Use your common sense and your instincts to **avoid any situation where a fall could occur.** Pay attention to your new dimensions, especially door frames!
- ▶-Be careful of your movements and baby's movements, which can change your balance. Stop babywearing when balance or mobility is impaired because of exercise, drowsiness, or medical conditions.
Put a hand on baby if you have to make fast movement or you have to bend.
- ▶-Check for ripped seams or fabric. If found, stop using the "babywearing feature" of your T-shirt and contact us: 438-289-1243 or toll free line 1-855-850-9279 **info@vija-design.com.**

The Skin to skin Cami & Bandeau

Baby must be sitting IN INNER "X" Baby's HEAD must be at "KISSABLE HEIGHT"

Baby's HEAD must be at "KISSABLE HEIGHT"

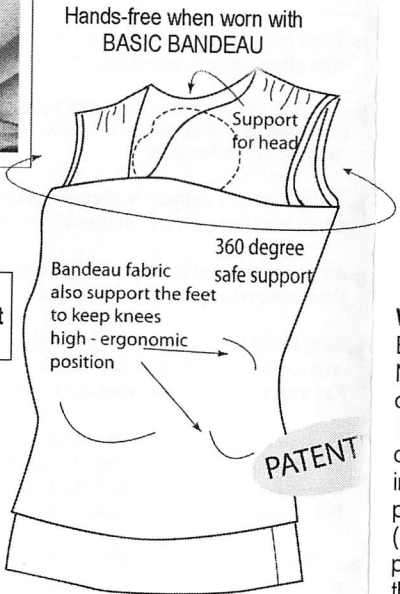


VISIBLE FACE

Put a hand on baby if you have to make fast movement or you have to bend

Patent #2,770,425

"Visible & Kissable" is a trademark of BCIA, registered in the U.S



THE "EASY HUG" NURSING CAMI & BANDEAU!!!

VIJA DESIGN

MAXIMIZING SKIN TO SKIN CONTACT WITH MORE MOBILITY

GOOD WEIGHT DISTRIBUTION



Carefully stretch and spread the fabrics, up to the under-knees, for a good weight distribution (vertical and horizontal support), without pressure points

foetale position

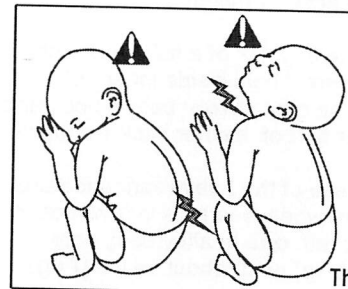


"M" frog position



SAFE POSITIONING:

The correct position is the position baby will naturally take when snuggled on you. For the first few days, the foetal position is correct. The upper arms / hands are raised and the head is in the axis of his spine one ear pressed on your clavicle, at the height for a kiss and visible face (nose / mouth). When legs will open a little bit more, so easier to "sit in squatted straddle position" in the "X". The baby's knees are approximately at the height of his navel and his back is slightly curved. (not much!)



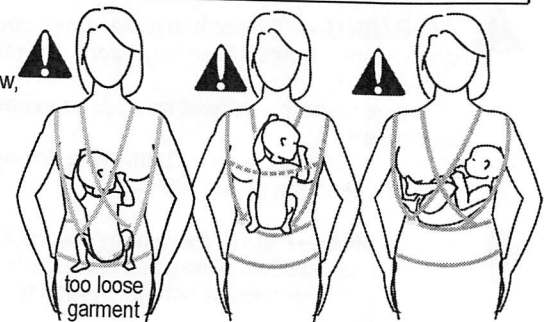
WARNING!

Baby's back should not have accentuated crooked "C" shape and baby's chin should not touch his / her chest.

Do not let baby's head to tip backwards

This can interfere with breathing

WARNING ! Baby should NEVER be low, outside the inner "X" or placed in a "cradle" position (horizontal position) in this garment.



How to place the baby:



Lay baby on one shoulder Slip the opposite side leg inside the upper cross panel and pull out the foot of the side of panel. Pull and spread the fabric to cover the buttocks and back up under the baby's knees. Rotate baby on the other shoulder and repeat the same thing on the other side. THE BABY MUST BE SEATED AT THE BOTTOM OF THE "X"



Re-adjust the side panels and then raise the Basic Bandeau up to baby's neck. Knees of baby must be folded about the height of navel. Slip the neckline facing over baby's head in a natural position, without covering the nose.



HOW TO REMOVE BABY

Push down the Basic Bandeau and open the cross-over neckline. Slide out the baby from Cami by supporting baby firmly by the rib cage, under the arms, your fingers must support the head. Lift vertically until baby is released in full. If his feet are hooked in fabric, lay him down on your shoulder and gently loosen the legs, one by one.

Distributor/ Importer

BE CAREFUL: it is primarily a (pretty) nursing Cami. Take same precautions as any other "regular" garment, don't over-stretch